



» The Dust Protection System

English
1/2020





MayTec System Technology



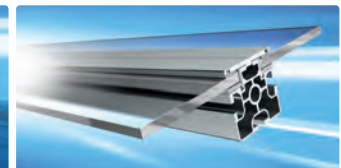
The Profile System



The Clean-Room System



Safety Barriers



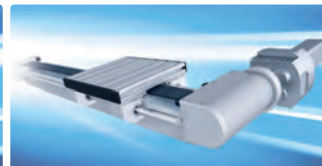
The Modular Wall System



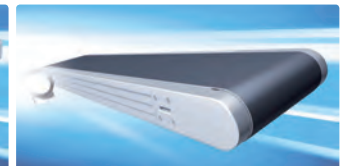
The Tube Clamping System



The Telescopic System



The Linear System



The Conveyor System



The Personnel Transfer System



The Skid Transfer System



The Dust Protection System



The Pipe & Joint System



The Trailer System

powered by

MayCAD
Design Software

MayTube
Design Software

The ideal profile system

MayTec offers a comprehensive, harmonised profile system. All profiles can be combined in any way conceivable.

The accessories provide functional and aesthetic solutions for a wide range of applications.

Applications

- machine bases
- machine enclosures
- machine guarding
- work stations

Service

The MayTec service is as versatile as the MayTec profile system.

You may choose:

- delivery of standard elements ex-factory
- delivery of profiles and accessories cut to size according to parts list for customer's assembly
- delivery of pre-fitted modular components
- delivery of completely assembled units
- assembly at your premises

- assembly and inspection stations
- transfer and supply trolleys
- partitions and protective walls
- protective and work cabinets

Implementation

The MayTec profile system is easy to process and quick to assemble. Its flexible and modular construction means it can be easily modified and is reusable at any time.

An experienced team will support you in implementing the MayTec system, tailored to your individual applications, taking into consideration your dimensions, loading capacity and stability.

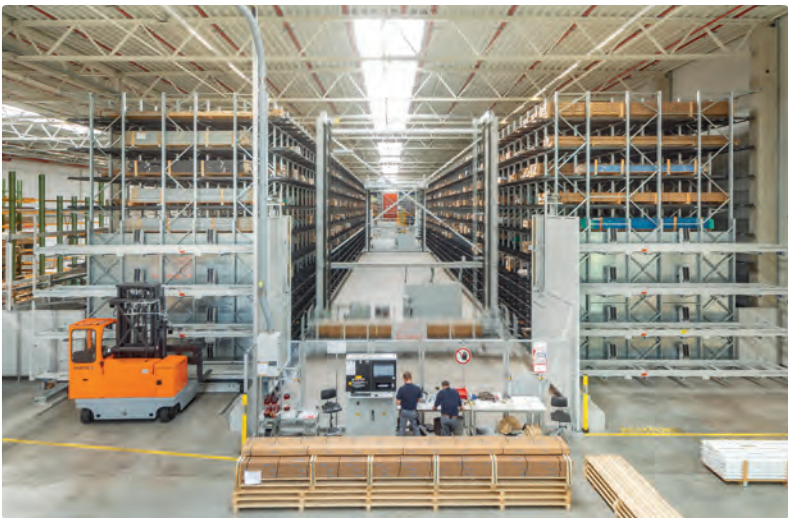
- special shelves
- plant equipment
- display systems
- exhibition cabinets and stands



MayTec GmbH plant in Olching



Accessory storage



Stock of aluminium profiles



Panel storage



Profile machining

Dust protection for automotive paint shops

Advantages for paint shops

- 1. Improvement of the air quality to class F9
- 2. Increase of the "first run" rate
- 3. Reduction of rework due to dust
- 4. Reduction of cleaning time
- 5. Increase worker safety



Daimler project
Ludwigsfelde paint shop
model "Sprinter" - NCV3

Enclosure of materials handling
over 3 production floors

Enclosed floor space	4,200 m²
Length of wall section	1,300 m
Glass area	4,600 m²



Porsche project
Zuffenhausen paint shop
model "Porsche 911"

Enclosure of materials handling
over 4 production floors

Enclosed floor space	4,800 m²
Length of wall section	1,750 m
Glass area	5,100 m²



Porsche project
Leipzig paint shop
model "Porsche Macan"

Enclosure of materials handling
over 4 production floors

Enclosed floor space	16,000 m²
Length of wall section	2,100 m
Glass area	7,500 m²









